

Boating Fun

Designed by Ann Wanke of the Quilted Basket Pattern Co.
Featuring the Storybook Vacation collection by Whistler Studios
Size: 44" x 52"



Check www.windhamfabrics.com Free Project section to see if there are any pattern updates before you start your quilt project



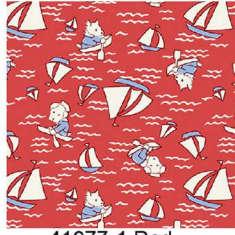
812 Jersey Ave ~ Jersey City, NJ 07310 ~ 201.659.0444 ~ FAX: 201.659.9719
www.windhamfabrics.com email: retail@windhamfabrics.com

Boating Fun

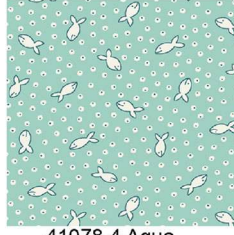
Page 2



41075-X Multi



41077-1 Red



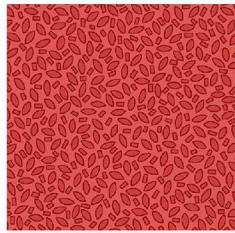
41078-4 Aqua



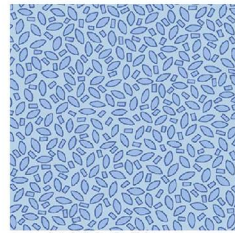
41080-6 Green



41081-6 Green



41083-1 Red



41083-2 Blue

Fabric Needed:

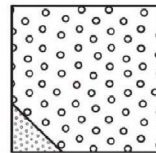
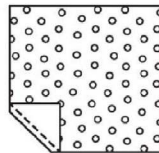
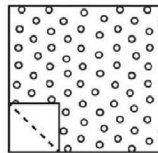
41075-X Multi	1 ½ yard
41077-1 Red	¼ yard
41078-4 Aqua	¼ yard
41080-6 Green	1/3 yard
41081-6 Green	½ yard
41083-1 Red	3/8 yard
41083-2 Blue	1 ¼ yard
41082-2 Blue	3 yards (Backing)

Block 1 Cutting Instructions: Snowball blocks

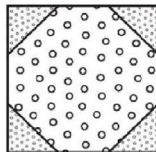
	<u>Cut:</u>	<u>Crosscut into:</u>
41075-X Multi	(3) 8 ½" strips	(10) 8 ½" squares
41077-1 Red	(2) 3 ½" strips	(40) 3 ½" square

Block 1 Piecing instructions: All seams 1/4 inch

1. With right sides together: position a 3 ½" square on the corner of the 8 ½" square. Draw a diagonal line on the small square, stitch on the line. Trim, press open, as shown. Repeat process on remaining three corners.



2. Repeat process on remaining (9) 8 ½" squares.



WINDHAM FABRICS

Boating Fun

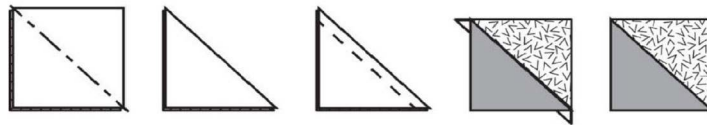
Page 3

Block 2 Cutting instructions:

	<u>Cut:</u>	<u>Crosscut into:</u>
41083-2 Blue	(3) 2 ½" strips (5) 2 7/8" strips	(40) 2 ½" squares Half Square Triangle units
41083-1 Red	(2) 2 ½" strips (2) 2 7/8" strips	(20) 2 ½" squares Half Square Triangle units
41080-6 Green	(3) 2 7/8" strips	Half Square Triangle unit
41078-4 Aqua	(3) 2 ½" strips	(10) 2 ½" x 8 ½" rectangles

Block 2 Piecing instructions: Sailboat blocks

1. Half Square Triangle units: Using Blue sky and frog 2 7/8" strips: Place right sides together. Cut into (20) 2 7/8" squares. Cross cut on the diagonal to create (40) half square triangle units.
2. Sew diagonal seam to create Half Square Triangle units. Press towards Blue sky fabric. Trim extensions.



3. Using Blue sky and red boat 2 7/8" strips: Repeat Steps 1 and 2.
4. Using all parts cut and pieced, layout sailboat block using picture of quilt as your guide. Press. Block should measure 8 ½".

Putting it all together:

1. Layout quilt top alternating Snowball and Sailboat blocks. Sew rows together to create quilt. Press. Should measure 32 ½" x 40 ½".
2. Inner Border: From 41077-3 Yellow: Cut (4) 2 ½" strips. Sew to sides of quilt top first, press. Sew remaining strips to top and bottom of quilt. Press. Quilt top should measure 36 ½" x 44 ½".
3. Outer Border: From 41075-X Multi: Cut (5) 4 ½" strips. Sew to top and bottom of quilt first, press. Sew remaining strips to both sides of quilt. Quilt top should measure 44 ½" x 52 ½". Press top well
4. Quilt: Layer top, batting and backing. Quilt as desired.
5. Binding: From 41083-2 Blue: Cut (6) 2 ½" strips. I use the double fold method of binding. However, feel free to bind as desired.

© 2015 Ann M. Wanke

the Quilted Basket Pattern Co. LLC

Menomonee Falls, WI

Be sure to visit www.windhamfabrics.com to see the complete collection and to download other Free Projects

